

# CLARITYII™

with IntelliTrak technology

The *digital*  
*future* of laser  
hair removal.

CYNOSURE®  
LUTRONIC®



# The truly complete LHR platform

- **Digitally powered:** High energies, faster rep rates, bigger spot sizes (2-25mm included standard)
- **IntelliTrak technology:** >2X faster\*, more consistent treatment coverage
- Exclusive 1ms: **extra fine hair** removal capability
- **Air Cooling System (Zimmer):** optimized patient safety and comfort
- Real-time **Skin Temperature Feedback** for effective laser toning and increased safety
- Pure 755nm/1064nm wavelengths for safe treatments on **all skin types**

*\* 2x faster at 755nm, 3ms, 12J/cm<sup>2</sup>, using 22mm @3Hz with Clarity II, vs older analog system at 18mm @ 2Hz*





# The *ultimate* laser hair removal platform ✓

The digitally powered Clarity II enables **faster and more effective treatments with higher power, higher speed, and larger spot sizes**, including innovative technologies such as Air Cooling System (Zimmer), IntelliTrak, and the exclusive 1ms pulse.

- Standby/Ready Button
- Finger Switch for Laser
- LED Feedback Light
- Protective Window
- IntelliTrak Tip

# Real patients. Genuine concerns. *Life-changing results*✓

## HAIR REMOVAL Courtesy of Ecoux Laser Boutique



Before and after 3 treatments

## HAIR REMOVAL Courtesy of David J. Friedman, MD



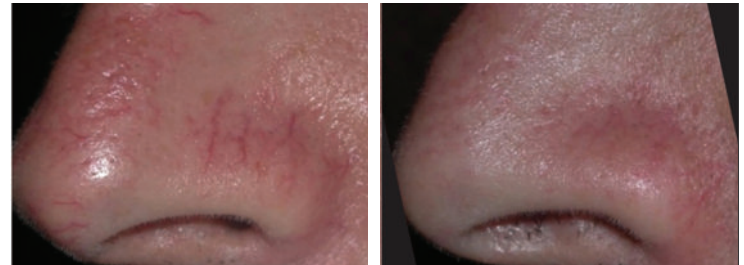
Before and after 1 treatment

## SKIN REVITALIZATION Courtesy of J.H. Won, MD



Before and after 3 treatments

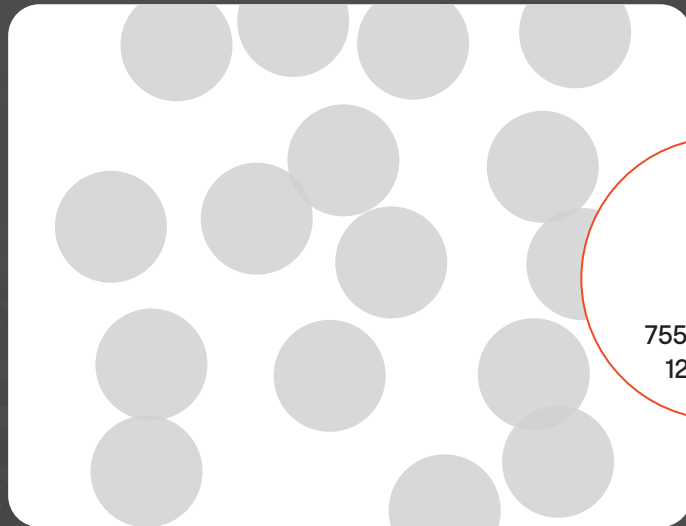
## NASAL TELANGIECTASIA Courtesy of David J. Friedman, MD



Before and after 3 treatments

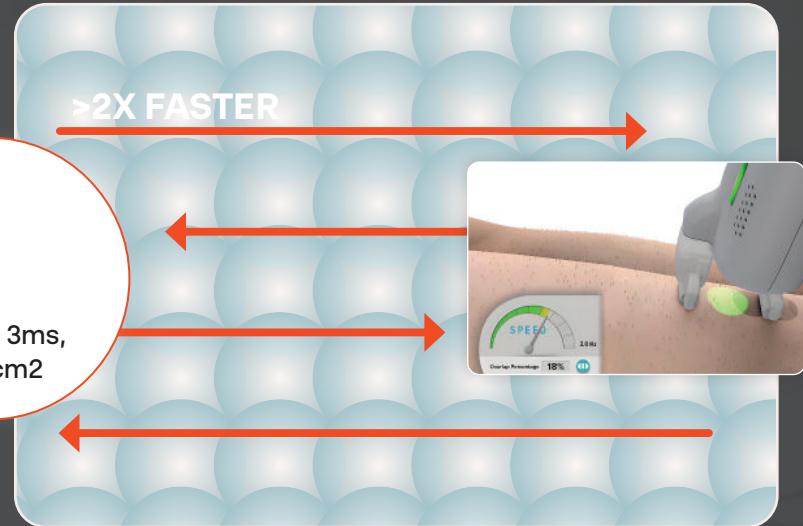
# The *IntelliTrak*<sup>TM</sup> enables rapid and consistent coverage for large areas ✓

Inconsistent & less coverage in 8 seconds



18mm spot at 2.0Hz  
manual

Consistent large coverage in less than 8 seconds



22mm spot at 3.0Hz  
*18% overlap*

# The system of choice for *all your patients* /

Clarity II offers you the flexibility to treat every patient to a **safe, effective and personalized aesthetic experience**, at double the speed.



Permanent  
Hair Reduction



Skin  
Revitalization



Vascular  
Lesions



We're your trusted  
*partner on this journey/*

### Technology

- Forward thinking science
- Digitally-powered innovations

### Product

- Significant clinical evidence
- Highest quality technological improvements

### Clinical

- Comprehensive virtual training
- Personalized in-office training for beginner and advanced teams

### Service

- Experienced technical support team 24/7
- Expert field service team

### Practice Development

- Industry expert consultants
- Focused on growing your business

### Amplified Marketing Practice Support

- Dedicated patient support team
- Comprehensive turnkey marketing



# CLARITYII™

with IntelliTrak™ technology

Visit/  
[www.lutronic.com](http://www.lutronic.com)

Follow us/

 @cynosurelutronicemea

 Cynosure Lutronic EMEA

Intended for Distribution in EMEA only.

©2024 CYNOSURE LUTRONIC, INC. All Rights Reserved. Clarity II and IntelliTrak are trademarks of Lutronic Aesthetic, Inc. Cynosure, LLC and Lutronic Aesthetic, Inc. do not diagnose or treat medical conditions, prescribe treatment protocols, provide medical advice, or otherwise practice medicine.

The Clarity II aesthetic workstation is indicated for the following: Coagulation and hemostasis of soft tissue and vascular lesions, port wine stains, hemangioma, warts, telangiectasia, rosacea, venus lake, leg veins, spider veins, treatment of benign pigmented lesions, lentigos (age spots), solar lentigos (sunspots), café-au-lait macules, seborrheic keratosis, nevi, chloasma, verrucae, skin tags, keratoses, wrinkles, vascular lesions. CUS-1624-EMEA

CYNOSURE  
LUTRONIC™

Attributes	Specifications
Wavelength(s)	755 nm / 1064 nm (Alexandrite / Nd:YAG)
Single Fiber Delivery	Lens-coupled optical fiber with handpiece (works with all spot sizes)
Digital Pulse Energy (Max Fluence)	Max 100J at Nd:YAG Max 60J at Alexandrite (Max Fluence: 600 J/cm <sup>2</sup> )
Pulse Width (ms)	0.10 ms - 300 ms; includes 1 ms for extra fine hair
Pulse Rate (Hz)	0.5 - 10 Hz
Multi-Spots included	2, 3-5, 8-10-12, 15-18-22, 16-20-25mm standard
Emission Control	Finger switch and foot switch
Cooling Type	Cyro ICD or Air Cooling*
Standby to Ready Time	12 seconds
Dimensions and Weight	39.3in (H), 37.5in (D), 22.2in (W); 242lbs (110kg)
Electrical Rating	6.0 kVA (AC 220 ~ 230V, 50/60 Hz, 30A)

\*Customized options available

