

eCO2™ 3D

Power. Precision. Versatility.
Meet 3D Resurfacing.

CYNOSURE®
LUTRONIC®



eCO2™ 3D

Power. Precision. Versatility.
Designed for every skin journey.

The most versatile CO2 laser in aesthetics, designed for gentle touchups, total transformations, and everything in between.

eCO2 3D is Cynosure Lutronic's next-generation fractional CO2 laser, engineered to redefine skin resurfacing. While CO2 lasers have long been the gold standard for resurfacing, they often come with compromises: Extended downtime, higher risk, and limited treatment flexibility. The eCO2 3D workstation transforms that equation. This intelligent, high performance platform delivers power, precision, and control, all in one system. Fully versatile, it adapts seamlessly from gentle, low-downtime sessions with Precision Peel to aggressive, transformative results, making it an ideal solution for a wide range of patient resurfacing needs.



3 Depths. 2 Modes. 1 Platform.
A new dimension in versatility.

- **NEW 33% More Power:** 40W system, for faster, more effective treatments, and sharper, deeper ablation zones.
- **NEW Three Spot Sizes (120µm, 300µm, 500µm):** Interchangeable tips offer the flexibility to personalize treatments by depth, density, and target condition, from deep wrinkles to texture refinement.
- **Dynamic and Static Mode Synergy:** Static mode delivers deep, targeted resurfacing for tightening and wrinkle reduction, while Dynamic mode smooths tone and texture with fast, gentle, full-face treatments, cutting treatment time nearly in half for greater efficiency and easier scheduling.
- **Controlled Chaos™ Technology:** Our patented randomized scanning ensures consistent energy delivery: safer, faster, more comfortable, with fewer hot spots, less downtime, and dramatic results.
- **Zero Consumables:** Unlike some platforms that require disposable tips or pay-per-pulse systems, the eCO2 3D platform has zero per-treatment consumable costs, increasing your ROI.

Real patients, *real results.*



Before and after 1 treatment

Courtesy of Zena Gabriel, MD



Before and after 1 treatment

Courtesy of Melanie Palm, MD



Before and after 1 treatment

Courtesy of Fine Fittings Med Spa



Before and after 1 treatment

Courtesy of Fine Fittings Med Spa

3 Depths for 3D Resurfacing

From a **light touch** to **deep renewal**, count on even energy distribution, uniform vaporization, and precise control at **3** different depths, with **3** unique tips.

- Customizable density range
- Power range from 4mJ to 240mJ

120 μm

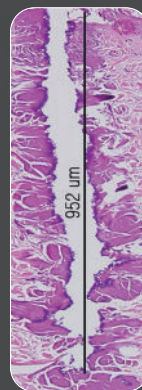
For a deep transformative treatment, with deeper coagulation

300 μm

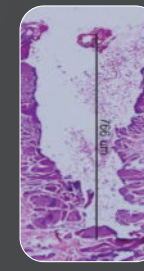
For less aggressive, more comfortable resurfacing with wider, shallower coagulation

500 μm

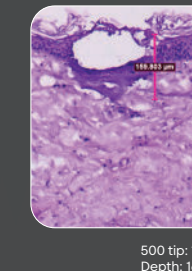
For a gentle low-downtime skin refresh with Precision Peel.



120 tip: 60mJ
Depth: 952 μm



300 tip: 60mJ
Depth: 766 μm



500 tip: 10mJ
Depth: 160 μm

PRECISION PEEL by eCO2 3D

Precision Peel is eCO2 3D's signature low-downtime resurfacing protocol, designed for patients seeking visible improvement in texture, tone, and radiance without the recovery associated with traditional CO2 treatments. Powered by the system's three unique tips, Precision Peel treatments can be performed quickly and comfortably, making them ideal for new patients, maintenance regimens, or event prep.

“



“Precision Peel with the eCO2 3D has completely redefined my approach to gentle CO2 resurfacing. Using the 500µm tip with 40W of power, I can quickly achieve both very shallow and targeted depth in a single pass, expanding treatment possibilities while keeping downtime impressively minimal. Patients love achieving smoother texture and refreshed glow without putting their lives on hold.”

– Gilly Munavalli, MD



We're your trusted
partner on this journey

Technology

- The world's most versatile CO2 laser
- Featuring Controlled Chaos Technology

Product

- Supported by extensive clinical evidence
- 120µm, 300µm, and 500µm tips

Clinical

- Comprehensive virtual training
- Personalized in-office training for both beginner and advanced teams

Service

- Experienced technical support team 24/7
- Expert field service team

Practice Development

- Industry-leading expert consultants
- Focused on growing your business

Amplified Marketing Practice Support

- Dedicated patient support team
- Comprehensive turnkey marketing



eCO2™ 3D

Visit www.cynosurelutronic.com

Follow us/

 [cynosurelasers](#)  [Cynosure, LLC](#)

 [lutronic_us](#)  [Lutronic](#)

Intended for distribution in US and Canada.

©2025 CYNOSURE LUTRONIC, INC. All Rights Reserved. eCO2 3D, Precision Peel, and Controlled Chaos Technology are trademarks of Lutronic Aesthetic, Inc. Cynosure, LLC and Lutronic Aesthetic, Inc. do not diagnose or treat medical conditions, prescribe treatment protocols, provide medical advice, or otherwise practice medicine. Dr. Gilly Munavalli is a paid consultant.

The eCO2 3D aesthetic workstation is indicated for the following: Skin resurfacing, wrinkles and fine lines, furrows, scars, acne scars, surgical scars, textural irregularities, dyschromia, pigmented lesions, lentigines, actinic & solar elastosis, actinic keratosis, precision ablation and/or vaporization of soft tissue in dermatology and plastic surgery, coagulation & resurfacing of soft tissue, keloids, xanthelasma palpebrarum, syringoma, laser derm ablation, debridement, and vaporization, ablation, vaporization, excision, incision, and coagulation of soft tissue.

921-7077-001 R03

CYNOSURE™
LUTRONIC™

| Attributes | Specifications |
|------------------------------|--|
| Laser Type | 10,600nm Fractional CO2 |
| Platform Power | 40W |
| Laser Delivery System | Articulated Arm with Handpiece |
| Microbeam Sizes | 120µm 300µm, and 500µm included standard |
| Pulse Energy | 4-240mJ |
| Pulse Rate | 10Hz – 200Hz |
| Density | 25-400 spots/cm2 |
| Scan Area | Max 18x18mm |
| Scan Type | Static and Dynamic |
| Scan Mode | ■ ■ ● • |
| Controlled Chaos Technology™ | Exclusively available to reduce risk of bulk heating and PIH |
| Dimensions and Weight | 391mm(W) x 819mm(L) x 1817mm(H); 99.2lbs (45kg) |
| Electrical Rating | AC 100-230 V, 50Hz/60 Hz (FUSE 250V/6.3A, 125V/6.3A) Power consumption: 550 VA |

